



Ability

Thanks to innovative PET washing technology and high quality performance, KITECH intelligent recycling and washing system removes the most difficult contaminants from waste plastics, and provides high quality and pure washing results for customers.



Stability

KITECH PET washing system is available for 24 hours working non-stop operation. Optimized design and top brand components to each module. Which could minimize the downtime ratio and save the maintenance time. This ensures the maximum availability and highest productivity for user.



Efficiency

KITECH PET washing system is designed in all details for efficiency improving. The modular design could simplify the planning and accelerate the implementation. The system have very low consumption values for electricity, water and labor. The operating costs and maintenance costs are absolutely reduced. Consistently the lowest investment costs and highest value creation.



Modularity

KITECH PET washing system is a flexible modular system. All elements required by any customer for different application could be combined freely. This design reduces planning, construction and assembly time effectively. And it's possible to adjust the system regard to technological modification and market changing. This makes the investment future-proofing.



Control

Automatic modular control of KITECH PET washing system reduces the labor operation, makes the whole system easier and more reliable to control, the remote monitoring and maintenance are available for different production lines. The intelligent control has display for operating data, it also collects the data of the consumption and the capacity from production line. Which ensures the connection between the enterprises and the internet, will improve the efficiency of enterprise management.



Service

KITECH PET washing system is a flexible and customer-oriented recycling solution. All the components of the whole line is globally well-known brands, which ensures the reliable operation and serves your exact needs. Furthermore, Our engineers will partner with you for the whole project, building design, overseas installation, commissioning and training are available. Machine warranty with spares in stocking and in-time delivery. Consistently quick and careful service in pre-sales and after-sales process.

★ Technical Data

Sheet grade PET washing system

Type	Capacity (t/h)	Energy consumption (kWh)	Steam consumption (t/h)	Chemical consumption (t/h)	Water consumption (t/h)	Installation power (kW)	Space (m ²)	Man power (person/shift)
PET500	500	110	500	10	0.7	220	700	6
PET1000	1000	170	600	14	1.5	395	800	8
PET2000	2000	340	1000	18	3	430	1200	10
PET3000	3000	460	1200	28	4.5	590	1500	12
PET5000	5000	680	1500	50	8	850	2000	12

Fiber grade PET washing system

Type	Capacity (t/h)	Energy consumption (kWh)	Steam consumption (t/h)	Chemical consumption (t/h)	Water consumption (t/h)	Installation power (kW)	Space (m ²)	Man power (person/shift)
PET500	500	70	300	10	0.7	190	500	10
PET1000	1000	140	500	12	1.5	340	700	12
PET2000	2000	280	800	16	3	390	1000	16
PET3000	3000	350	1000	25	4.5	520	1200	18
PET5000	5000	590	1200	40	8	920	1500	25

PET pelleting system

Type	Capacity (t/h)	Motor power (kW)	L/D	Rotary speed (rpm)	Vacuum pump (kW)	Drier (kW)
TSK-65	150-350	45-55	36-40	300-400	7.5-11	35
TSK-75	250-450	110-132	36-40	300-400	11-18.5	58
TSK-95	300-1000	200-315	36-40	300-400	20-30	75

JIANGSU KITECH MACHINERY CO.,LTD

Email : info@kitechpm.com

Tel : +86-512-5855 1200

Fax : +86-512-5896 2531

Web : www.kitechpm.com

Add : No.7 Jiulong industry park, Jinfeng Town, Zhangjiagang City, Jiangsu, China

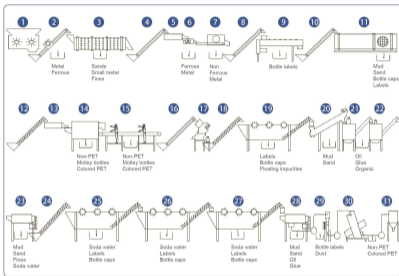


PET Washing & Pelletizing System



PET Bottles / Flakes Washing System

PET bottles / flakes washing line is one of the main recycling series of KITECH machinery. This system applies to waste PET plastics recycling with different pollution levels. Which can remove ferrous and nonferrous metals, sand, oil, glue, rubber, wood, PE/ PP/ BOPP labels and many other different contaminants efficiently. It also provides a good solution for mixed color PET and materials containing PVC. The modular design makes it easy to have different combinations according to the requirements of the customers, such as bottle to fiber, bottle to flake, bottle to bottle washing systems. KITECH provides 500-6000 kg/h economy and high-level automatic production lines with different configurations.



- | | | | |
|---------------------------|---------------------------|----------------------------|-----------------------|
| 1. Bale breaker | 2. Belt conveyor | 3. Trommel | 4. Belt conveyor |
| 5. Vibration feeder | 6. Magnetic drum | 7. Eddy current separator | 8. Belt conveyor |
| 9. Label remover | 10. Belt conveyor | 11. Pre-washer | 12. Screw loader |
| 13. Vibration feeder | 14. Bottle optical sorter | 15. Manual sorting section | 16. Belt conveyor |
| 17. Crushers2 | 18. Screw loader | 19. Floating tank | 20. Friction washer |
| 21. High-speed hot washer | 22. Low-speed hot washer | 23. Centrifugal dryer | 24. Screw loader |
| 25. Floating tank | 26. Floating tank | 27. Floating tank | 28. Centrifugal dryer |
| 29. Zig-zag separator | 30. Flakes optical sorter | 31. Silo | |

Raw material



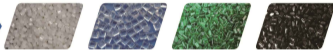
Bottles Bottles Bottle flakes Cold washed flakes

Clean Flakes



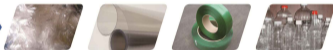
White flakes Blue flakes Green flakes Mixed color flakes

PET Pellets



White pellets Transparent pellets Green pellets Dark pellets

PET Products



Fiber Packing sheet PET strap Bottles



Metal sorting



Label remover



Pre-washer



Crusher



Hot washer



Friction washer



Floating washer



Centrifugal dryer



Zig-zag separator



Water treatment system



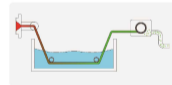
Color sorter



Material sorter

PET Flakes Pelletizing System

TSK series PET pelletizing system is a reliable recycling production line consists of stable drying system, strong vacuum degassing system, efficient filtration system, strand cutting system and viscous equipment. All these advanced technologies ensure high quality final PET pellets, which can be used for a wide range of applications (fibers, bottles containers, packing sheets, strap, non-woven fabrics) with a capacity range of 100-1000kg/h.



Strand pelletizer



Automatic strand pelletizer



Vacuum Degassing System



Filtration System



Pre-heating System



SSP System